



AGD1 Dial Indicators

401 Series



401-06-1



401-05-2

FEATURES

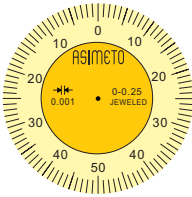
- Graduation:
Inch: .0005" / .001"
Metric: 0.01mm
- Dial face dia.: Ø1.61" / Ø42mm
- Jeweled
- Flat back (attached) and lug back supplied
- Inch models without revolution counter

STANDARD ACCESSORIES

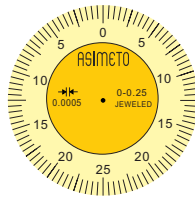
- Flat Back
- Warranty card, Instruction manual, Calibration certificate

SPECIFICATIONS

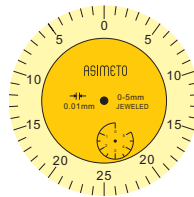
Range	Graduation	Range / Rev.	Dial Reading	Accuracy	Code No.
Stem diameter Ø3/8"					
0-.25"	.001"	.1"	0-100	± .001"	401-06-1
0-.25"	.001"	.1"	0-50-0	± .001"	401-06-3
0-.25"	.0005"	.05"	0-25-0	± .0005"	401-06-5
0-3mm	0.01mm	0.5mm	0-50	± 0.010mm	401-03-1
0-5mm	0.01mm	0.5mm	0-50	± 0.012mm	401-05-1
0-5mm	0.01mm	0.5mm	0-25-0	± 0.012mm	401-05-3
Stem diameter Ø8mm					
0-3mm	0.01mm	0.5mm	0-50	0.010mm	401-03-0
5mm	0.01mm	0.5mm	0-50	0.012mm	401-05-0
5mm	0.01mm	0.5mm	0-25-0	0.012mm	401-05-2



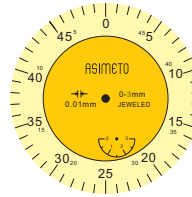
401-06-3



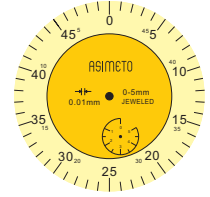
401-06-5



401-05-2
401-05-3

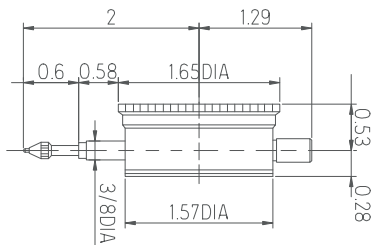


401-03-0
401-03-1

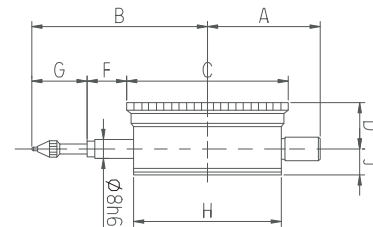


401-05-0
401-05-1

Inch Dimension



Metric Dimension



Range	A	B	C	D	F	G	H	J
	mm	mm	mm	mm	mm	mm	mm	mm
0-3mm	30.6	46.4	42	13.5	14.7	10.7	40	7
0-5mm	30.6	48.4	42	13.5	14.7	12.7	40	7



AGD2 Dial Indicators

402 Series

FEATURES

- Graduation Inch: .0001" / .0005" / .001"; Metric: 0.001mm / 0.01mm
- Dial face dia.: Ø2.20" / Ø58mm
- Easy to read dial face
- Jeweled
- Internal tolerance marker
- Flat back (attached) and lug back supplied
- With counter pointer
- IP54 water proof series: with sealed housing & water resistant ring.

STANDARD ACCESSORIES

- Flat back, Warranty card, Instruction manual, Calibration certificate

SPECIFICATIONS

Range	Graduation	Range / Rev.	Dial Reading	Accuracy	Code No.
Stem Diameter Ø3/8"					
0-.05"	.0001"	.01"	0-100	± .0001"	402-01-1
0-.05"	.0001"	.01"	0-50-0	± .0001"	402-01-3
0-.05"	.0001"	.01"	0-5-0	± .0001"	402-01-5
0-.25"	.001"	.1"	0-100	± .002"	402-06-1
0-.25"	.001"	.1"	0-50-0	± .002"	402-06-3
0-.25"	.0005"	.05"	0-25-0	± .0015"	402-06-5
0-.50"	.001"	.1"	0-100	± .002"	402-12-1
0-.50"	.001"	.1"	0-50-0	± .002"	402-12-3
0-.50"	.0005"	.05"	0-50	± .002"	402-12-5
0-1"	.001"	.1"	0-100	± .002"	402-26-1
0-1"	.001"	.1"	0-50-0	± .002"	402-26-3
0-1"	.0005"	.05"	0-50	± .002"	402-26-5
0-2"	.001"	.1"	0-100	± .004"	402-51-1
0-3mm	0.01mm	1mm	0-100	± 0.01mm	402-03-1
0-3mm	0.01mm	1mm	0-50-0	± 0.01mm	402-03-3
0-5mm	0.01mm	1mm	0-100	± 0.012mm	402-05-1
0-5mm	0.01mm	1mm	0-50-0	± 0.012mm	402-05-3
0-10mm	0.01mm	1mm	0-100	± 0.015mm	402-10-1
0-10mm	0.01mm	1mm	0-50-0	± 0.015mm	402-10-3
0-20mm	0.01mm	1mm	0-50-0	± 0.025mm	402-20-1
0-25mm	0.01mm	1mm	0-50-0	± 0.035mm	402-25-3
Stem Diameter Ø8mm					
0-1mm	0.001mm	0.2mm	0-200	0.005mm	402-01-0
0-1mm	0.001mm	0.2mm	0-200	0.005mm	P402-01-0
0-1mm	0.001mm	0.2mm	0-100-0	0.005mm	402-01-2
0-1mm	0.002mm	0.4mm	0-100-0	0.006mm	402-01-6
v0-1mm	0.002mm	0.4mm	0-100-0	0.006mm	402-01-7
0-1mm	0.001mm	0.1mm	0-100	0.005mm	402-01-8
0-3mm	0.01mm	1mm	0-100	0.010mm	402-03-0
0-3mm	0.01mm	1mm	0-50-0	0.010mm	402-03-2
0-5mm	0.01mm	1mm	0-100	0.012mm	402-05-0
0-5mm	0.01mm	1mm	0-50-0	0.012mm	402-05-2
0-10mm	0.01mm	1mm	0-100	0.015mm	402-10-0
0-10mm	0.01mm	1mm	0-50-0	0.015mm	402-10-2
0-10mm	0.01mm	1mm	0-50-0/0-100	0.015mm	402-11-0
0-20mm	0.01mm	1mm	0-50-0	0.025mm	402-20-0
0-20mm	0.01mm	1mm	0-100	0.025mm	402-20-2
0-25mm	0.01mm	1mm	0-50-0	0.035mm	402-25-0
0-25mm	0.01mm	1mm	0-100	0.035mm	402-25-2
0-30mm	0.01mm	1mm	0-100	0.035mm	402-30-0
0-30mm	0.01mm	1mm	0-50-0	0.035mm	402-30-2
0-50mm	0.01mm	1mm	0-100	0.035mm	402-50-0
0-100mm	0.01mm	1mm	0-100	0.05mm	402-00-0
Shock Proof. Stem Diameter Ø8mm					
0-5mm	0.01mm	1mm	0-100	0.012mm	402-05-4
0-10mm	0.01mm	1mm	0-100	0.015mm	402-10-8
0-20mm	0.01mm	1mm	0-100	0.025mm	402-20-8
IP54 Water Proof Series					
0-10mm (Stem Dia. Ø8mm)	0.01mm	1mm	0-100	0.015mm	402-10-4
0-0.4" (Stem Dia. Ø3/8")	.001"	.1"	0-100	.002"	402-26-7
0-0.4" (Stem Dia. Ø3/8")	.0005"	.05"	0-50	.0015"	402-26-9



402-10-0



402-26-5

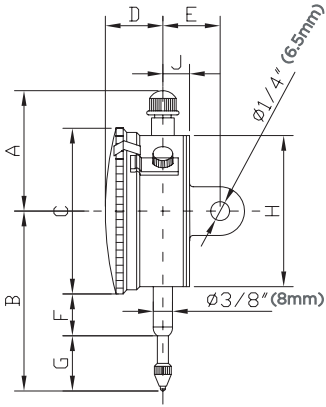


402-10-4

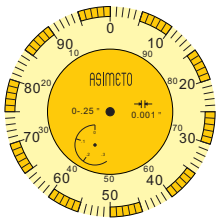


AGD2 Dial Indicators

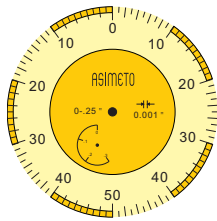
402 Series



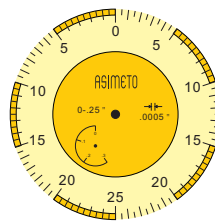
Range	A	B	C	D	E	F	G	H	J
Inch	inch	inch	inch	inch	inch	inch	inch	inch	inch
0-.05"	1.76	2.39	2.28	0.64	0.76	0.69	0.56	2.11	0.32
0-.25"	1.48	2.54	2.28	0.64	0.76	0.69	0.71	2.11	0.32
0-.5"	1.48	2.74	2.28	0.64	0.76	0.69	0.91	2.11	0.32
0-1"	1.48	3.21	2.28	0.64	0.76	0.69	1.38	2.11	0.32
0-2"	4.73	5.5	2.28	0.7	0.76	2	2.34	2.11	0.32
Metric	mm	mm	mm	mm	mm	mm	mm	mm	mm
0-1mm	45	62	58	16.2	19.3	18.3	15	53.5	8.1
0-3mm	43.7	68.5	58	16.3	19	18.3	15	53.5	8.1
0-5mm	43.7	68.5	58	16.3	19	18.3	15	53.5	8.1
0-10mm	43.7	68.5	58	16.3	19	18.3	15	53.5	8.1
0-20mm	37.5	80.5	58	16.3	19.4	17.5	34	53.5	8.4
0-25mm	37.5	80.5	58	16.3	19.4	17.5	34	53.5	8.4
0-30mm	43.7	88	58	15	20	21.5	37.5	53.5	9



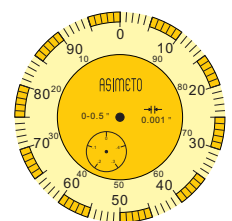
402-06-1



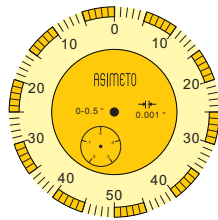
402-06-3



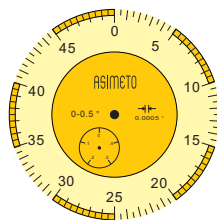
402-06-5



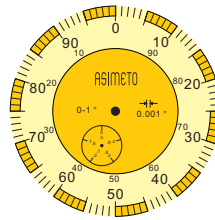
402-12-1



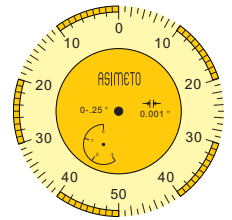
402-12-3



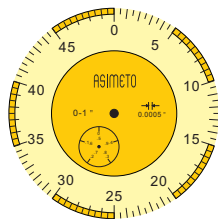
402-12-5



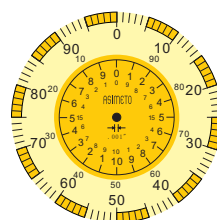
402-26-1



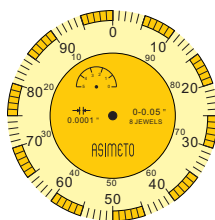
402-26-3



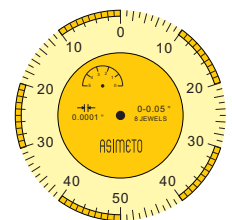
402-26-5



402-51-1



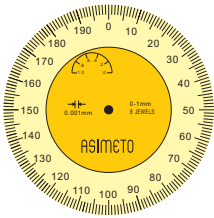
402-01-1



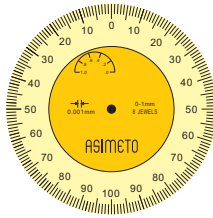
402-01-3



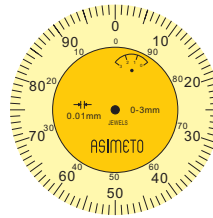
AGD2 Dial Indicators



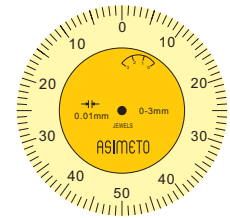
402-01-0
P402-01-0



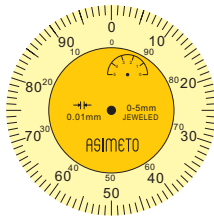
402-01-2



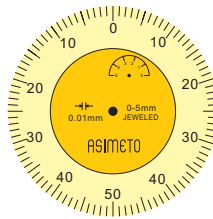
402-03-0
402-03-1



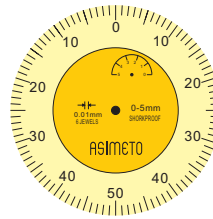
402-03-2
402-03-3



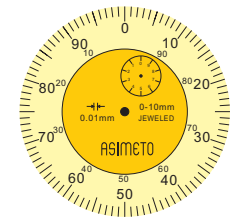
402-05-0
402-05-1



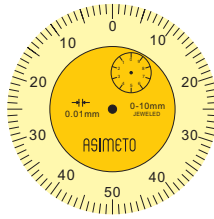
402-05-2
402-05-3



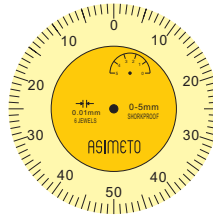
402-05-4



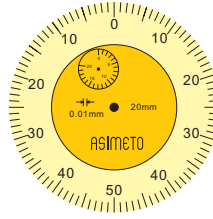
402-10-0
402-10-1



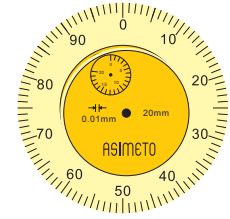
402-10-2
402-10-3



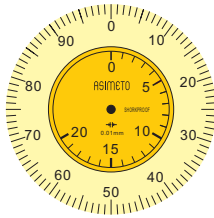
402-10-8



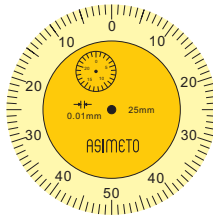
402-20-0
402-20-1



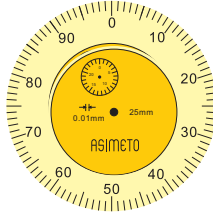
402-20-2



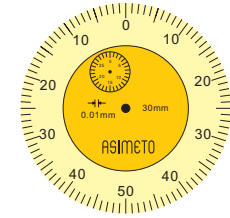
402-20-8



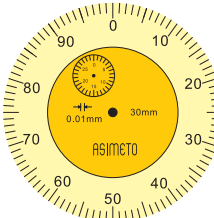
402-25-0
402-25-3



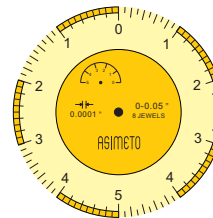
402-25-2



402-30-2



402-30-0



402-01-5